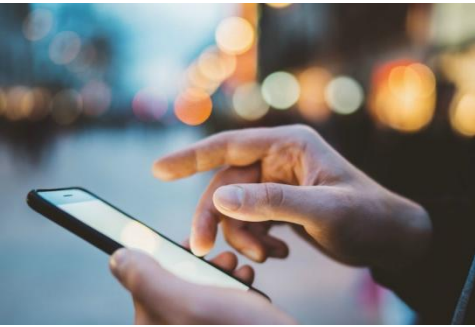


SED-15

4G I/O Controller & Dialler



The SED-15 is a versatile SMS controller and voice dialler designed for a wide range of applications. Its modular architecture allows users to tailor the system by selecting and adding only the features required for their specific use case.

The SED-15 can operate as a fully programmable SMS input/output controller, enabling remote monitoring and control of connected devices via mobile phone. Alternatively, it can be configured as a phone line interface with two-way audio pass-through, making it suitable for integration with alarm panels and auto diallers.

Features:

- Multiband 4G connectivity
- 10-30V DC Input power range (solar compatible)
- 4 input zones (with add-on I/O module)
- 4 controllable relay outputs (with add-on I/O module)
- SMS reporting to 8 mobile numbers
- Ability to write custom SMS messages
- 42V POTS phone line interface (with add-on SLIC module)
- Battery backed system (with add-on Battery module)

Applications:

- Farming automation
- Security systems
- Air conditioning
- Building automation
- General input/output control
- Lift emergency diallers



SEC-ENG
SYSTEMS

SED-15

4G I/O Controller & Dialler

FEATURES

The SED-15 operates over the 4G mobile network and is compatible with all major Australian carriers.

The SED-15 OPAD (base board) integrates the 4G communication module and onboard microprocessor, with optional add-on modules available to expand and configure the system to suit specific application requirements.

ADD-ON MODULES:

• SED-15 I/O

This module features 4 Input and 4 output. The inputs can be configured as NO, NC or EOL. Input activations can be set up to generate a SMS report message or control the onboard outputs. The output can be remotely controlled with SMS commands.

• SED-15 SLIC

The SLIC module allows the system to dialout and make voice calls over the 4G network. This is done via the RJ11 port which simulates a 42V POTS phone line interface.

• SED-15 BATT

A backup battery system can be added to the SED-15, which includes a proprietary lithium-ion battery pack that can provide up to 48hr of runtime.

REPORTING PATHS:

- SMS reporting
- Phone call to notify
- Phone line with voice pass through

TECHNICAL SPECIFICATIONS:

- Dimensions: 160 x 120 x 45mm (Housing)
- SIM Required: MICRO size (SMS & Voice enabled)
- Modem: UBOLX LARA R6 LTE
- Network Connectivity:
 - 2G** - 850/900/1800/1900 MHz
 - 3G** - 800/850/900/1700/1900/2100 MHz
 - 4G** - Band 1 (1920-2170 MHz)
 - Band 3 (1710-1880 MHz)
 - Band 5 (824-894 MHz)
 - Band 7 (2500-2690 MHz)
 - Band 8 (880-960 MHz)
 - Band 28 (703-803 MHz)
- Power Input: 10-30V DC
- Current draw: up to 1A at 12V DC
- I/O Relay rating: 0.5A at 125VAC, 2A at 30VDC
- Backup Battery: 3.6V 2.35Ah Lilon
(Sec.Eng Systems supplied)
- Programming interface: USB-C (via pc terminal)
- Antenna connector: SMA Female
- Antenna supplied: 3dBi Omni directional
- Antenna optional: 7dBi High Gain

