

SED-MTU

Multipurpose Tracking Unit



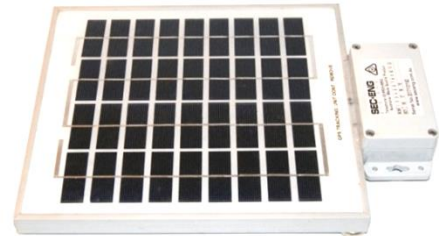
The SED MTU (Multipurpose Tracking Unit) is the latest hardware design from Sec-Eng Systems, utilising proven tracking technology based around years of design .This feature packed tracking product offers many features in GPS & 3G/4G communications for the tracking & appliance markets, providing unprecedented reliability in security and performance at budget price.

Various form factors available and designs from one product

In-Vehicle housing

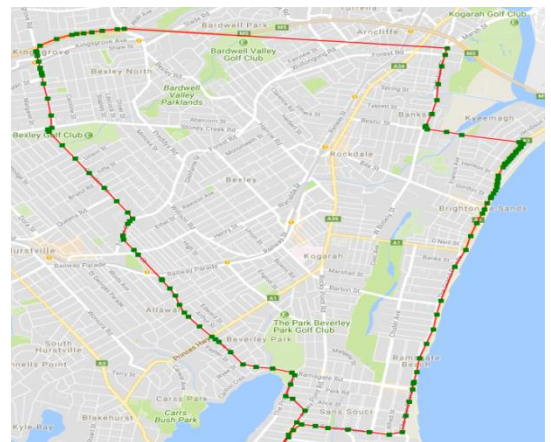
Under Vehicle Magnetic

Solar long life



Features

- Ability to trigger upon movement
- Ability to go into low power & sleep mode
- Various Battery form factors and sizes
- Operates directly to Pegasus Tracking Server
- Custom polling times and wake modes
- Custom coding available
- Solar charging available
- Quick & easy to deploy
- Built-in 3 axis Accelerometer
- Australian designed and developed



SED-MTU

Multipurpose Tracking Unit



Technical Specifications

Modes of operation

The MTU has an in-built 3 axis accelerometer to detect movement, & upon any movement the MTU will move out of sleep mode and into polling mode (programable time 15 sec to 5 mins).

Via the mobile network and commence tracking using its gps receiver.

When the asset stops moving the MTU can be programmed to go into sleep mode, and report in at programmed timed intervals , or remain on-line for a period of time.

The MTU can be configured to operate off a vehicles power source or can be configured to be self standing and operate off a solar panel to charge an in-built Lithium battery , depending on the poll times and charge mode This could operate for 2-3 week in the field, without charge.

NOTE: Longer field times can be configured by use of large battery packs.

The MTU is design to communicate with the Sec-Eng Pegasus cloud based server Platform , operating on the AWS cloud network .This software has been designed & developed by Sec-Eng and is in use by some of Australia largest companies.

This platform is a scalable system to suit your needs and budget and can be customised to suit your requirements.

See last page of this document for more information about Pegasus Tracking platform

Technical Information

- 2G/3G/4G modem Serria Wireless (removable for future upgrade)
- Hi Resolution Gps Chip Set (ublox)
- 1 pull to ground Digital Output 300ma (output control via Pegasus)
- 1 Pull to ground I/O input (Can be used to wake or trigger an alarm)
- Optional Back up battery 2300MA Optional external relay board for cut off control
- VEHICAL Antenna GPS / 3G/4G sealed puk style 3m lead set terminated to a SMA connectors
- Dimensions 130mm x 68 x 44 mm sealed plastic enclosure ABS IP 55
- Solar version 10w panel with MTU built onto side of solar panel Size w 253 L 420 H 40 mm
- Sim Card (Requires micro Sim)
- Compatible with Sec-Eng Pegasus Tracking Server only

Pegasus-Cloud Server Platforms

Australian Designed and supported



Pegasus Server-Software Solution Server Platform

The Pegasus tracking platform is a result of many years of design & development by Sec-Eng Systems, for tracking and monitoring solutions. The Pegasus software is designed to operate on a cloud based SQL server such as AWS or Azure which provides an off site high reliability solution with proven SLA uptime for your commercial use.

- EGIS Man down portable assets
- VTU Vehicle assets
- SED Fix wall assets
- SED MTU Multi purpose assets



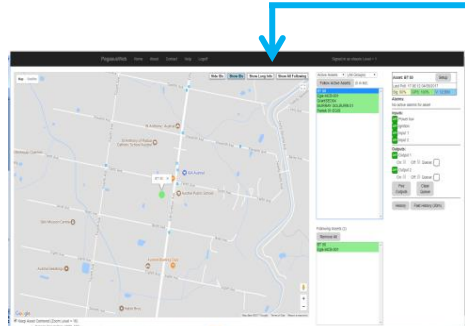
The AWS service is hosted here in Australia, offering a reliable service without the worry of hosting a bare metal based server on your premises.(We can offer a single or dual hot standby server configuration P.O.A depending on your needs.)

Features such as :

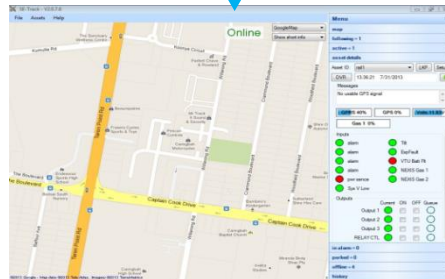
- Direct link to the cloud point server providing timed updates.
- Windows secure remote access for viewing and control
- Web based viewing for simple limited access
- Control of field assets (relay control)
- Set up and configuration of assets
- History traces & and logging (export to Excel)
- Real time input status of assets
- Indication of speed and location
- Ability to use different maps for viewing i.e Google, Bing, Yahoo
- Easy update of assets
- Built it remote software upgrade system for assets
- Optional: IP to Serial SiiP interface for security control room for automation linking
- 100 % Australian designed ,develop & supported by Sec-Eng staff



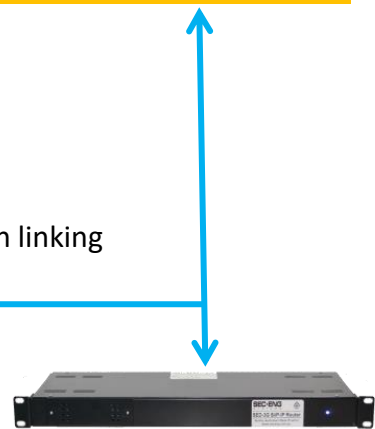
AWS Hosted Cloud-with Pegasus Software



Https Web Based



Secure listed RDP Based



**IP/4G -Serial Rack
Control room systems**

- Mass
- Dms
- Simms