

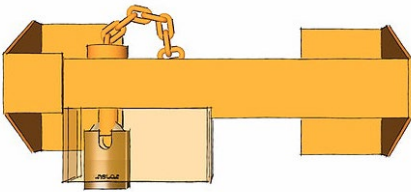
SED-CTU

Container Lock & Tracker



SEC-ENG Systems have teamed up with Kossie Lock to provide an all-in-one container lock, monitoring and tracking system. Based on the Kossie Container Lock product line, the SED-CTU adds a comprehensive electronic tracking system which operates on the 4G mobile network.

The SED-CTU system allow for the user to monitor the status of the container lock for tampering, as well as GPS location tracking in real time. The robust Kossie locking system provides the perfect platform to securely house the Sec.Eng System tracking electronics whilst maintaining full functionality.

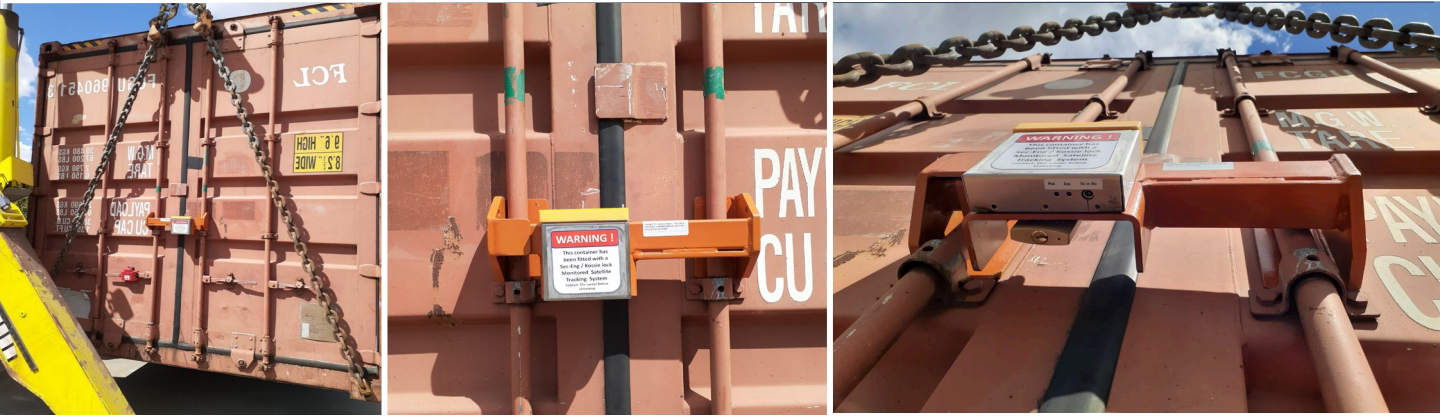


SED-CTU Features:

- IP65 rated weather resistant enclosure
- Bolt cutter proof (steel sleeve protects padlock)
- Tamper proof locking pin
- Tamper alarm reporting (locking pin, motion, tilt)
- Locking status reporting
- Long lasting battery operation (up to 60 days)
- 4G and 3G mobile network connectivity
- GPS location tracking (3-axis position)
- SEC-ENG System Pegasus tracking platform support
- Control Room monitoring support
- SMS status and position reporting
- Movement Speed reporting

SED-CTU

Container Lock & Tracker

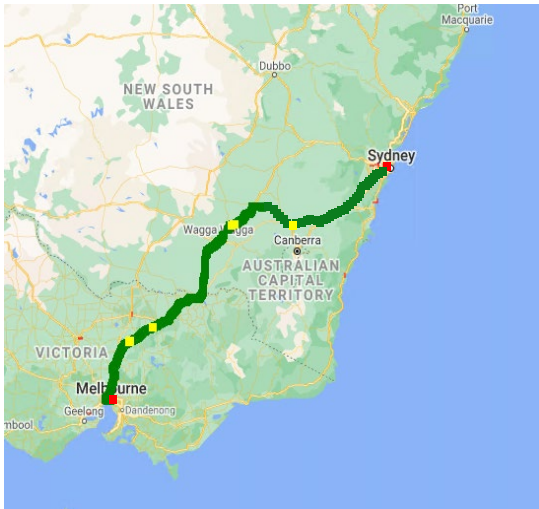


Applications:

- Stored container lock monitoring
- Container Transport tracking
- Ideal for Pantech truck overnight stops

Example:

The SED-CTU was set up to poll every 2 minutes and report over speed detection, slide bar lock status and tilt sensing.



Total track over 24 hrs

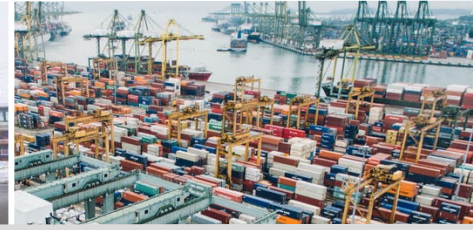


Zoom in view

- Green indicates a Poll to the server
- Red indicates an alarm (un-lock)
- Yellow indicates over speed setting

SED-CTU

Container Lock & Tracker



Technical Specifications

Dimensions: W 420mm x H 150mm x D 150mm (When Locked)

Weight: 9kg

IP Rating: IP65

LED Indicators: x2

Power Input: 24V DC

Battery Rating: 7.2V, 13.4Ah

Battery Runtime:

- 5 days at 120 seconds GPRS polling rate.
- 30 days at 8 hours GPRS polling rate.

Charge Time: 7 hours (from flat)

Polling Rate: Programmable

Tilt Sensing: 3 Axis digital accelerometer

GPS Chipset: U-Blox MAX 56-channel L1 C/A, GLONASS L1 FDMA, Galileo E1B/C

SIM Required: MICRO size

Modem: Sierra Wireless WP7609

Network Connectivity:

2G - 850/900/1800/1900 MHz

3G - 800/850/900/1700/1900/2100 MHz

4G - Band 1 (1920-2170 MHz)

Band 3 (1710-1880 MHz)

Band 5 (824-894 MHz)

Band 7 (2500-2690 MHz)

Band 8 (880-960 MHz)

Band 28 (703-803 MHz)

