

Pegasus-Cloud Server Platform

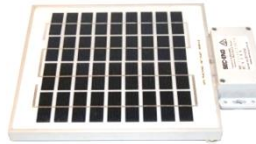
Australian Designed and supported



Pegasus Server-Software Solution Server Platform

The Pegasus tracking platform is a result of many years of design & development by Sec-Eng Systems, for tracking and monitoring solutions. The Pegasus software is designed to operate on a cloud based SQL server such as AWS or Azure which provides an off site high reliability solution with proven SLA uptime for your commercial use.

- EGIS Mandown portable assets
- VTU Vehicle assets
- SED series fix assets



The AWS service is hosted here in Australia, offering a reliable service without the worry of hosting a bare metal based server on your premises.

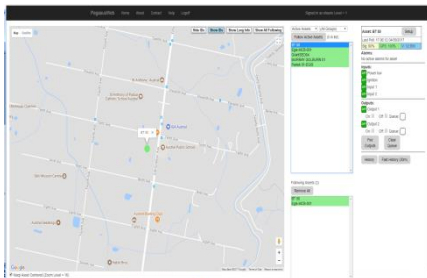
3G/4G

Features such as :

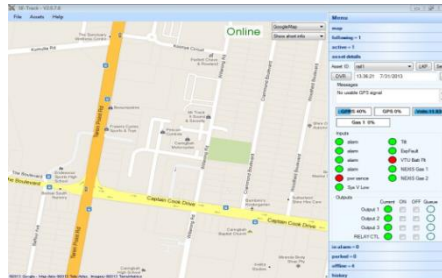
- Direct link to the cloud point server providing timed updates.
- Windows secure remote access for viewing and control
- Web based viewing for simple limited access
- Control of field assets (relay control)
- Set up and configuration of assets
- History traces & logging (export to Excel)
- Real time input status of assets
- Indication of speed and location
- Ability to use different maps for viewing i.e Google, Bing, Yahoo
- Easy update of assets
- Built it remote software upgrade system for assets
- Optional: IP to Serial SiiP interface for security control room for automation linking
- 100 % Australian designed and develop & supported by Sec-Eng



AWS Hosted Cloud-with Pegasus Software



Https Web Based



White listed RDP Based



IP/3G -Serial Rack

Control room systems

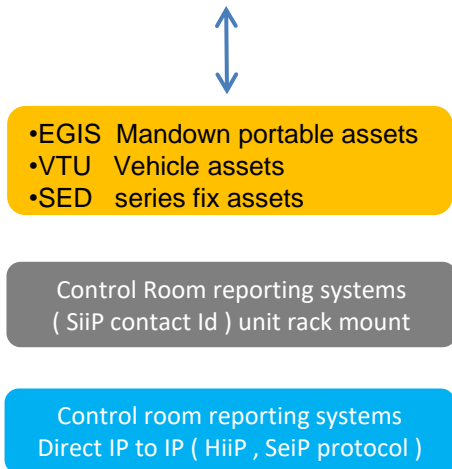
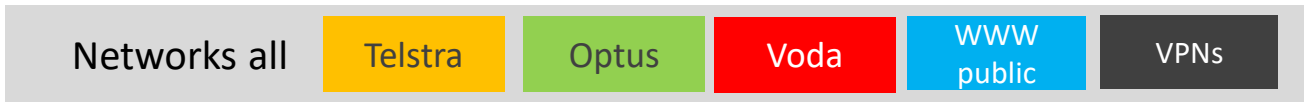
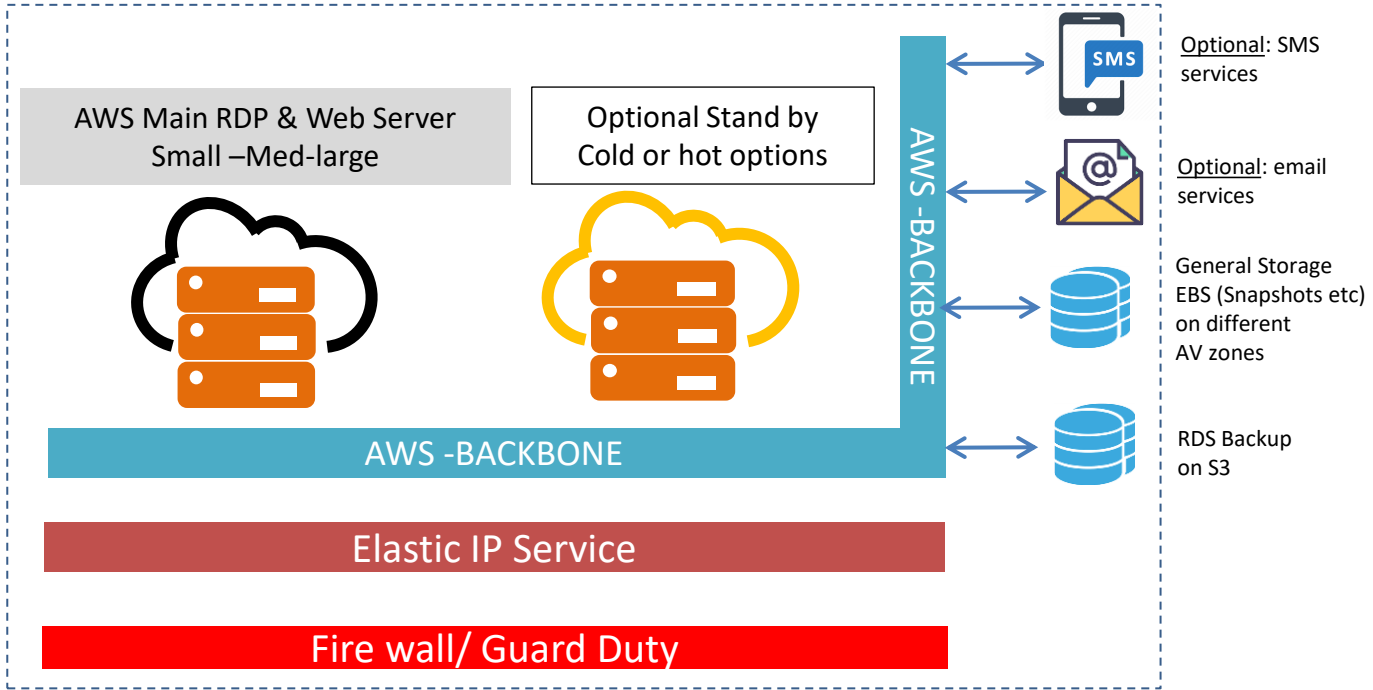
- Mass
- Dms
- Simms

Pegasus-Cloud Server Platform

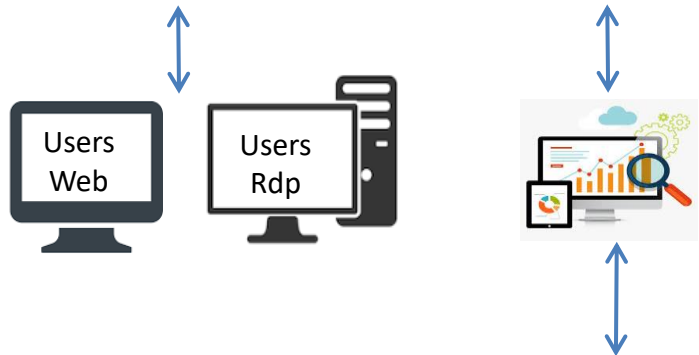
Australian Designed and supported



AWS Cloud server system overview (AWS Pegasus)



•For more Information on the protocol contact Sec-Eng



Sec-Eng PMC™

is a monitoring system developed by Sec Eng systems that Monitors all aspects of our cloud platforms externally Via Api calls so we have a constant live overview to deal with Security and Maintenance issues Live IN REAL TIME